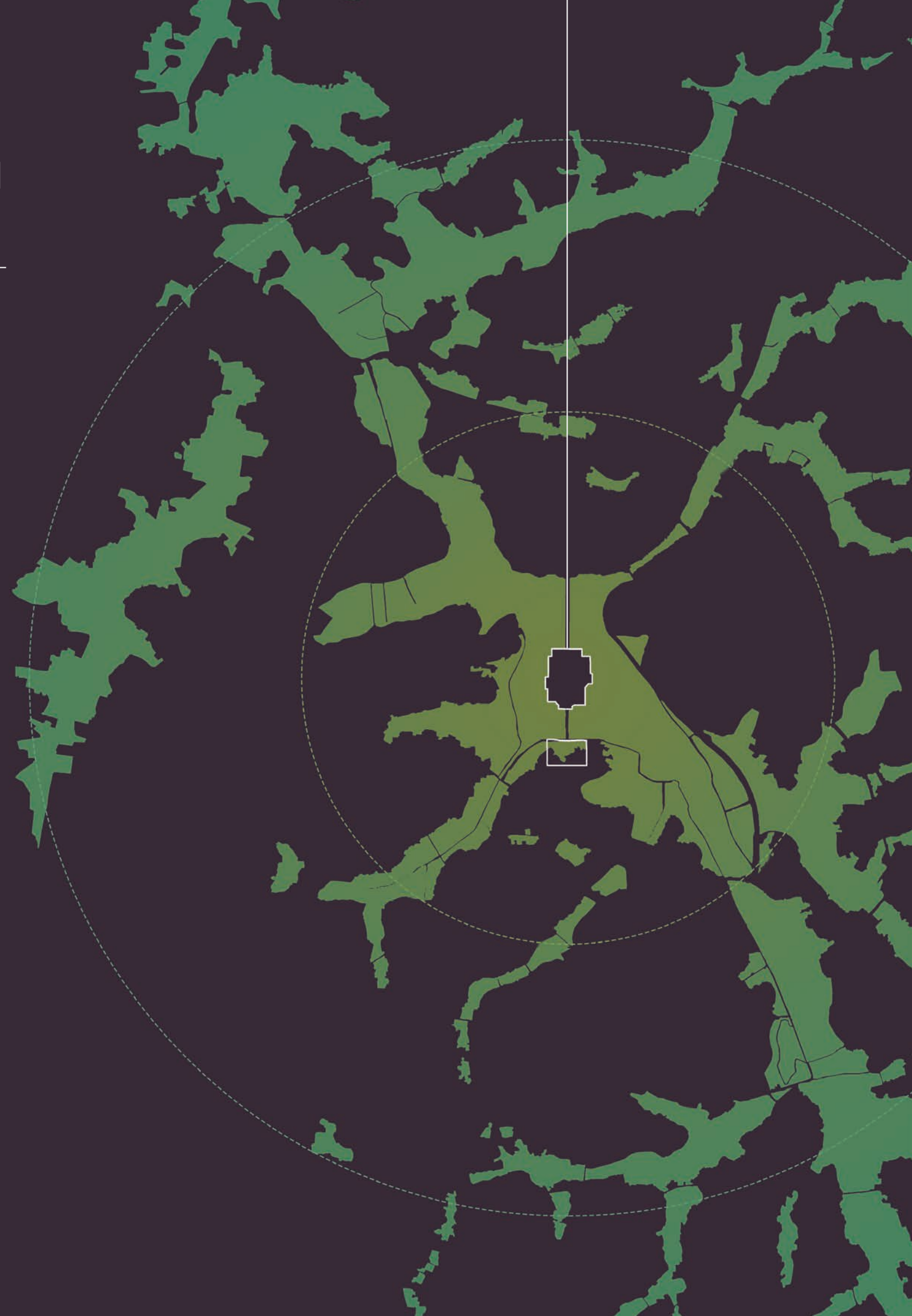


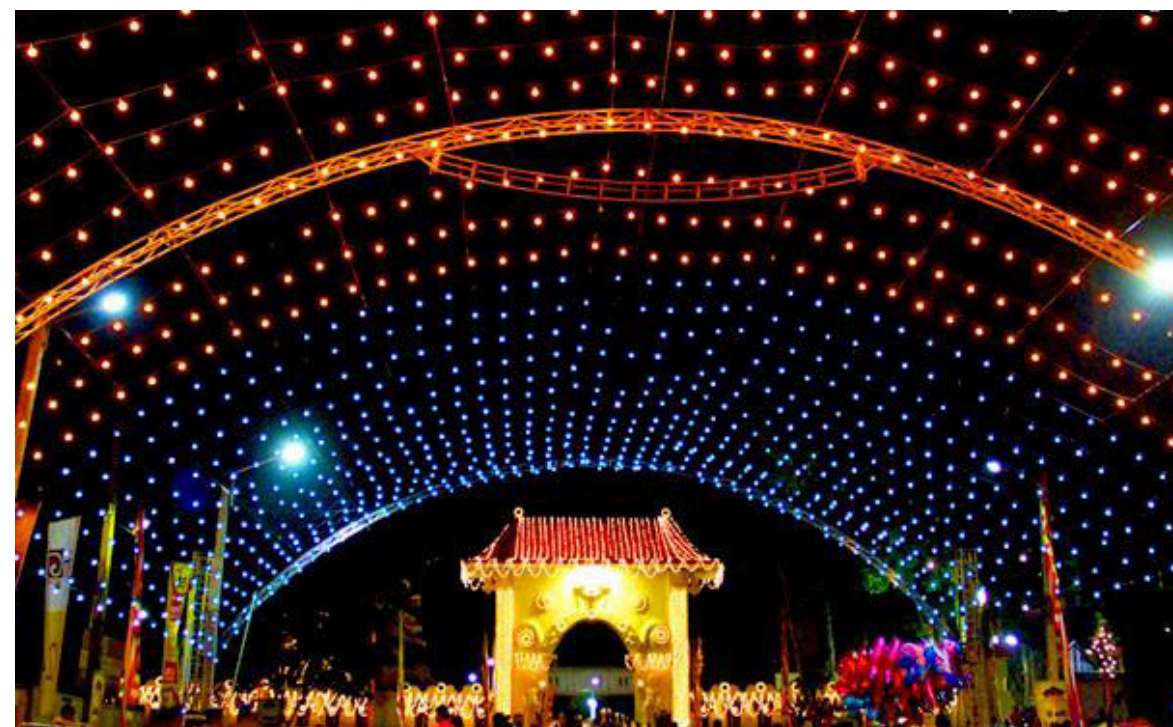
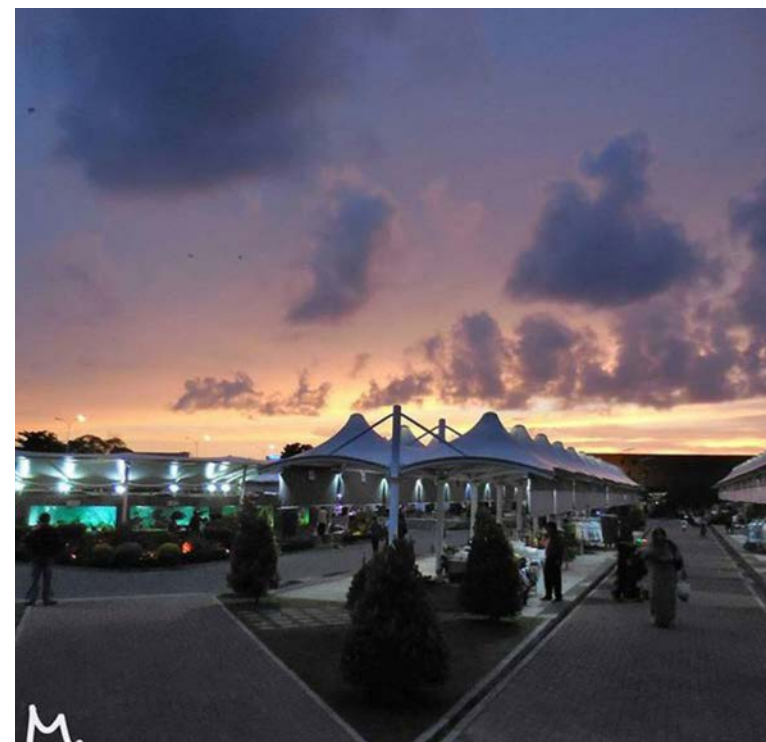
CAPITAL CITY DEVELOPMENT PLAN  
2019 – 2030

---

# DIADEM SOVEREIGN SRI LANKA





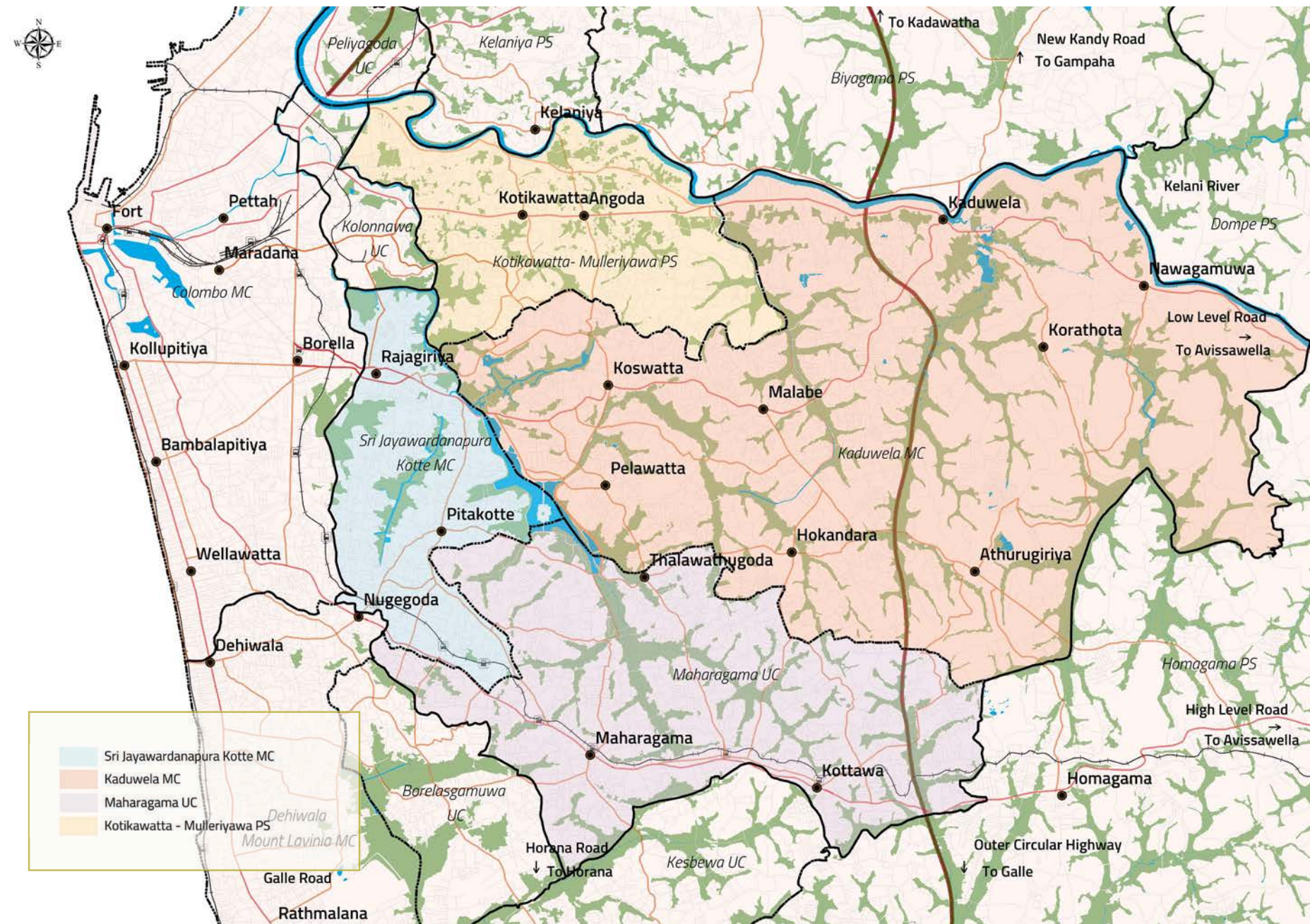




# THE KINGDOM OF KOTTE

History records that Sri Jayewardenapura Kotte was inaugurated by a minister named Alakeshwara in the Year 1350 B.C. He constructed a fortress, a magnificent lake and a moat round the fortress for defense purposes. Literary works of the periods indicate that this kingdom of Sri Jayawardhanepura attained its zenith of glory during the reign of King Prakramabahu the VI. The arrival of the Portuguese in 1505 B.C. marked

the fall of Sri Jayewardenapura. The abandoned city of Kotte appears to have been destroyed at a subsequent period by the Dutch. This way from 1565 onwards until the induction of New Administrative Capital, Sri Jayewardenepura Kotte remained in darkness. The formation of the New Parliament enlightened the status of the Administrative Capital City to where it is today.



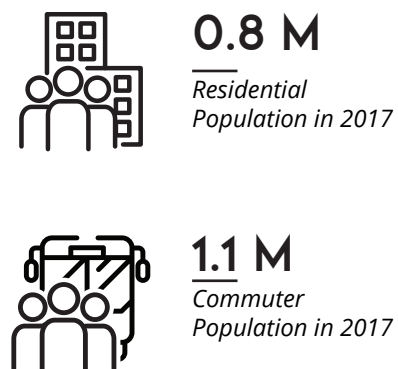
# THE CAPITAL CITY PLAN & OUR INTERVENTION

The Kotte-Sri Jayewardenapura, Sri Lanka's Capital City Development Plan sets out the vision, objectives and the strategies for an esteemed, sustainable and inclusive city with its own identity, vibrant spaces, community facilities and efficient urban systems. It provides the detail framework to guide future physical developments undertaken by the development agencies, investors, state and private organizations and the individuals within the respective **04 local authority areas** identified by the Plan for the 'Capital City Region'.

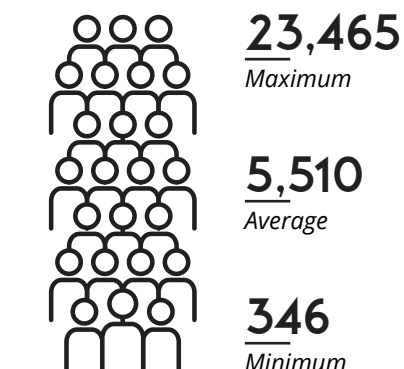


# DEMOGRAPHIC AND ECONOMIC STATISTICS

## Population



## Population Density

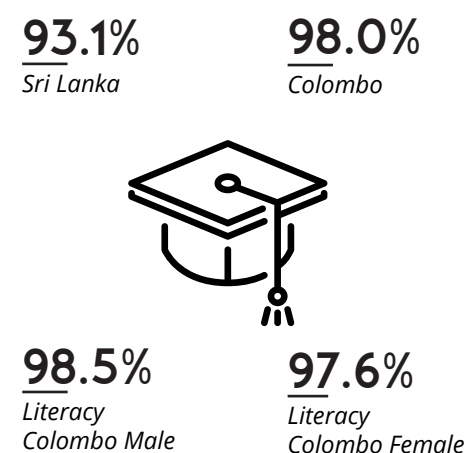


Population 2012/km<sup>2</sup>

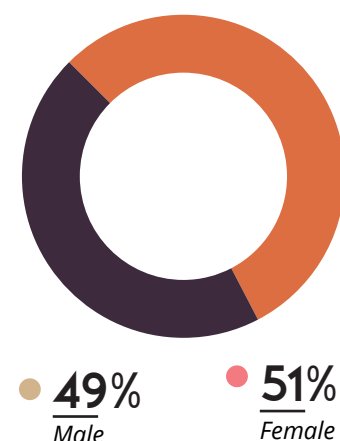
## Total Labor Force Participation



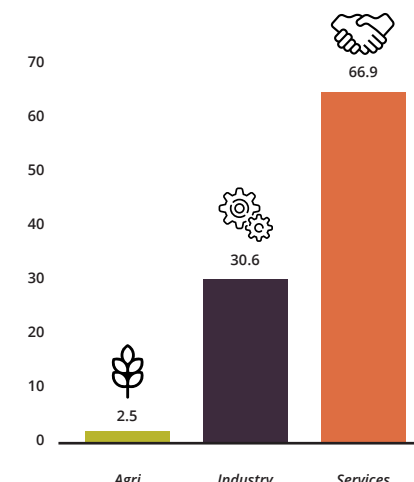
## Literacy Rate



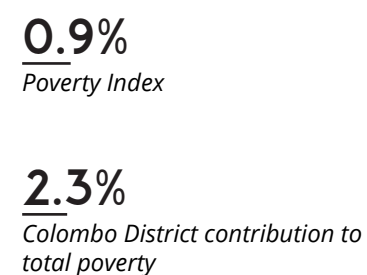
## Composition



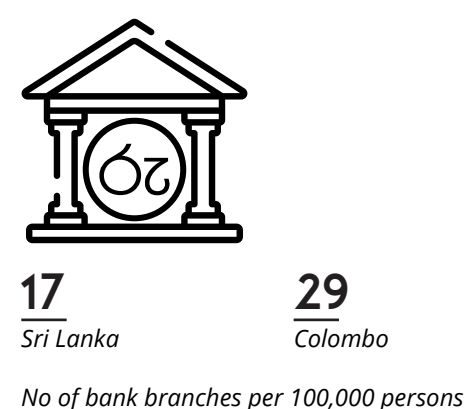
## Economic Sectors



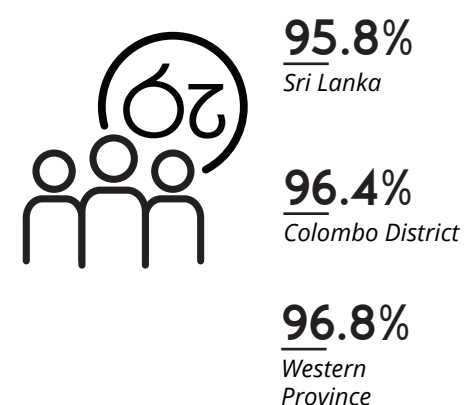
## Poverty Level



## Banking Density

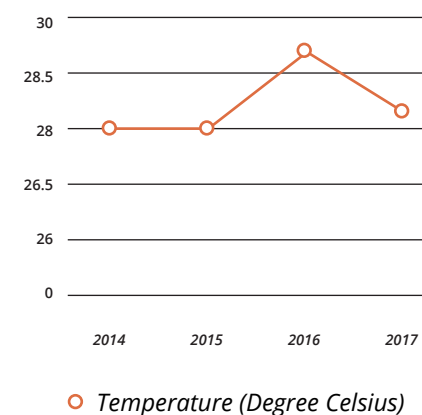


## Employment

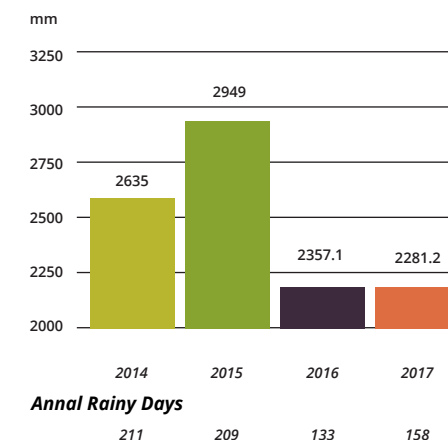


# ENVIRONMENT & SOCIAL STATISTICS

## Temperature



## Rainfall

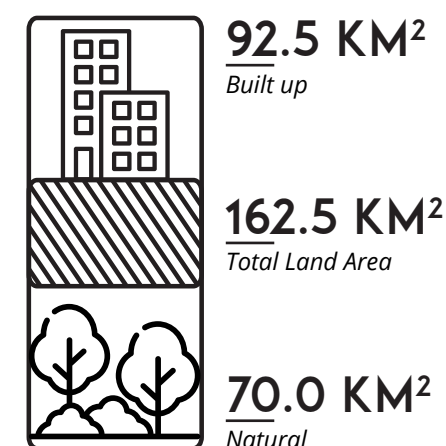


## Topography & Geology

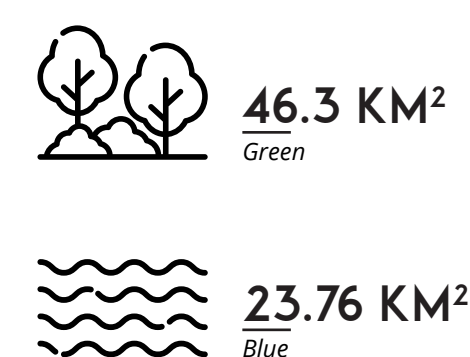
Generally flat in Coastal,  
MSL-Below 30m,  
Dominated by Precambrian

**Soil-Red-yellow Podzolic Soils,**  
Alluvial Soils-floodplains of kelani  
latesols & regosols on old red and  
yellow sands – Beach areas from  
wattala to Mt. Lavinia

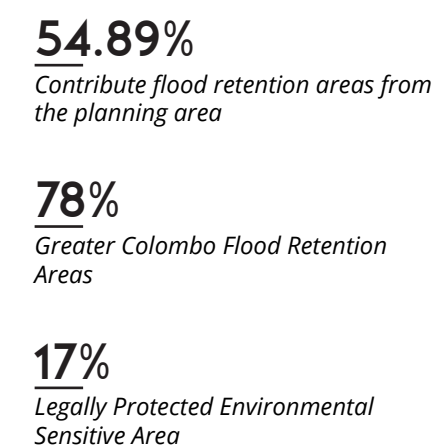
## Land Area



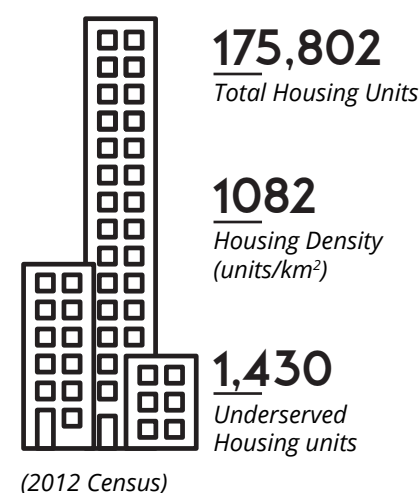
## Natural Environment



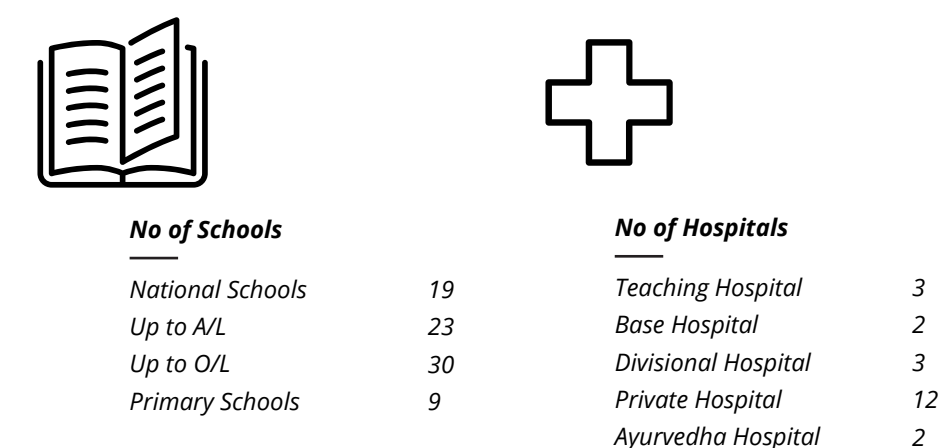
## Wetland Network



## Housing



## Health/ Schools



# VISION & CONCEPT

*The Capital City Development Plan is brought forward with the vision 'Diadem Sovereign Sri Lanka' which precedes the primary motive to rejuvenate the forgone glory of the once celebrated monarch of Sri Jayewardenapura back again on the current administrative capital, which is not adequately manifested in its physical environment and the order of activities. The glory of the Sri Lanka's Administrative Capital is expected to instill the sense of pride and healthy image of the city in the dwellers and users along with strong emphasis on the unique and sensitive environmental settings which will not be compromised during the implementation.*

## STRATEGIC GOAL 1

*the ambience of a capital city with a unique identity and inherited character.*

### Objective 1.1

To physically establish and sense the axis of tias politica

### Objective 1.2

To establish a sense of strong center and a hierarchy of enclosures and to provide the experience of capital city entrances at strategic locations.

## STRATEGIC GOAL 2

*The experience of a city bloomed in a chain of wetlands.*

### Objective 2.1

To conserve and enhance the protection of the existing wetlands ecosystem with an extent of 3296.10 hectares along with their catchments, within a total physical built up area of 16,250 hectares.

### Objective 2.2

To open up 81sqkm of wetlands, to the public and enhance water / wetland fronts with a length of 38.72km for development.

## STRATEGIC GOAL 3

*A place that prospers with smooth and efficient urban systems and smart urban facilities.*

### Objective 3.1

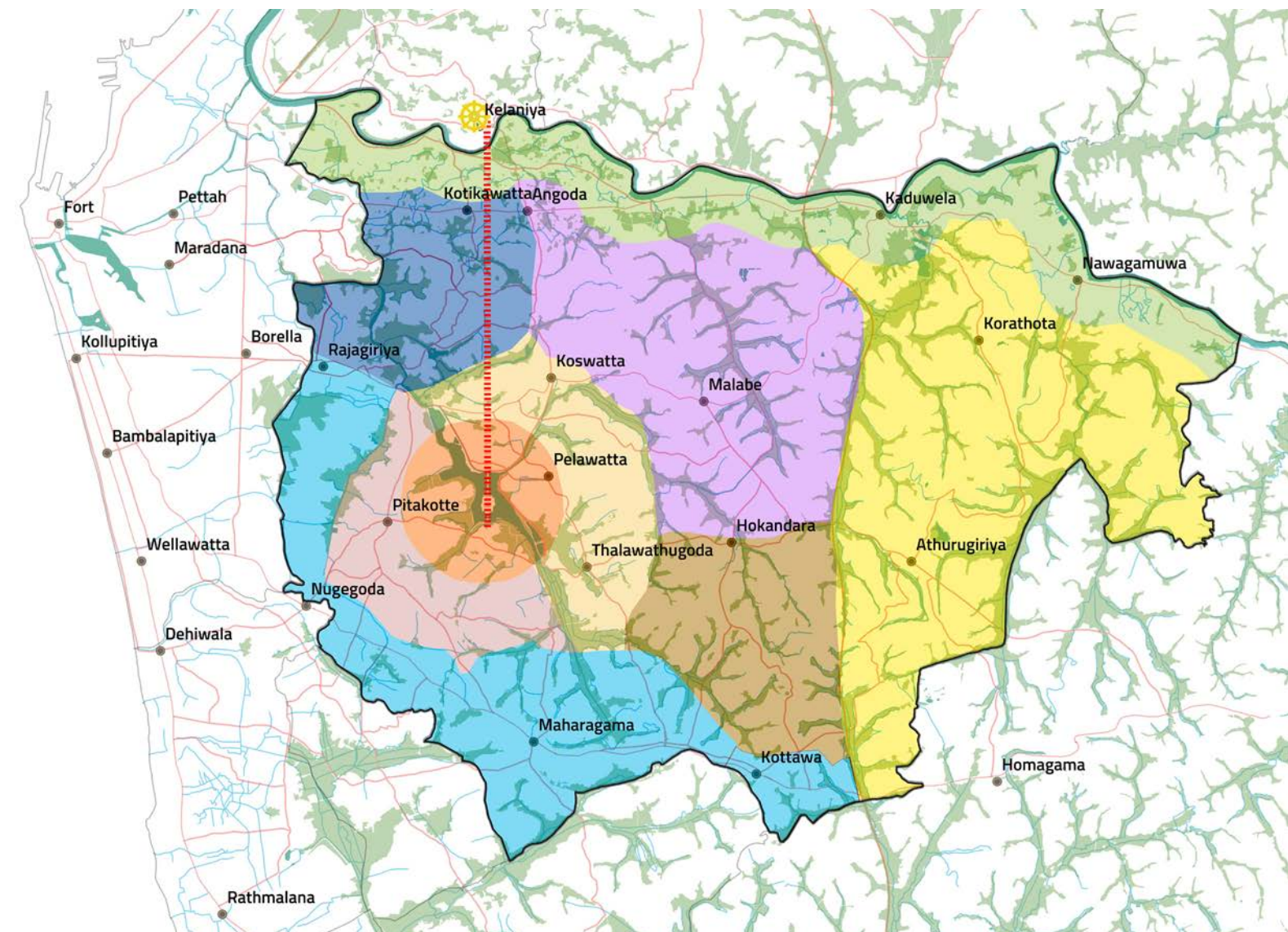
To provide adequate space for state sector workforce of 63,000 and 134,377,903sqm of space for residential community within the reach of average 3 to 10 kilometers from their work places, along with recreational facilities, economic infrastructure and necessary amenities.

### Objective 3.2

To create a network of reliable and comfortable public transport system, which provides maximum 30 minutes reach within any two locations (average speed of 50 km per hour) within the capital city area with a single transit/modal switch by 2030

### Objective 3.3

To upgrade the physical infrastructure in par with international standards and the smart urban facilities for the improvement of quality urban living by 2030.

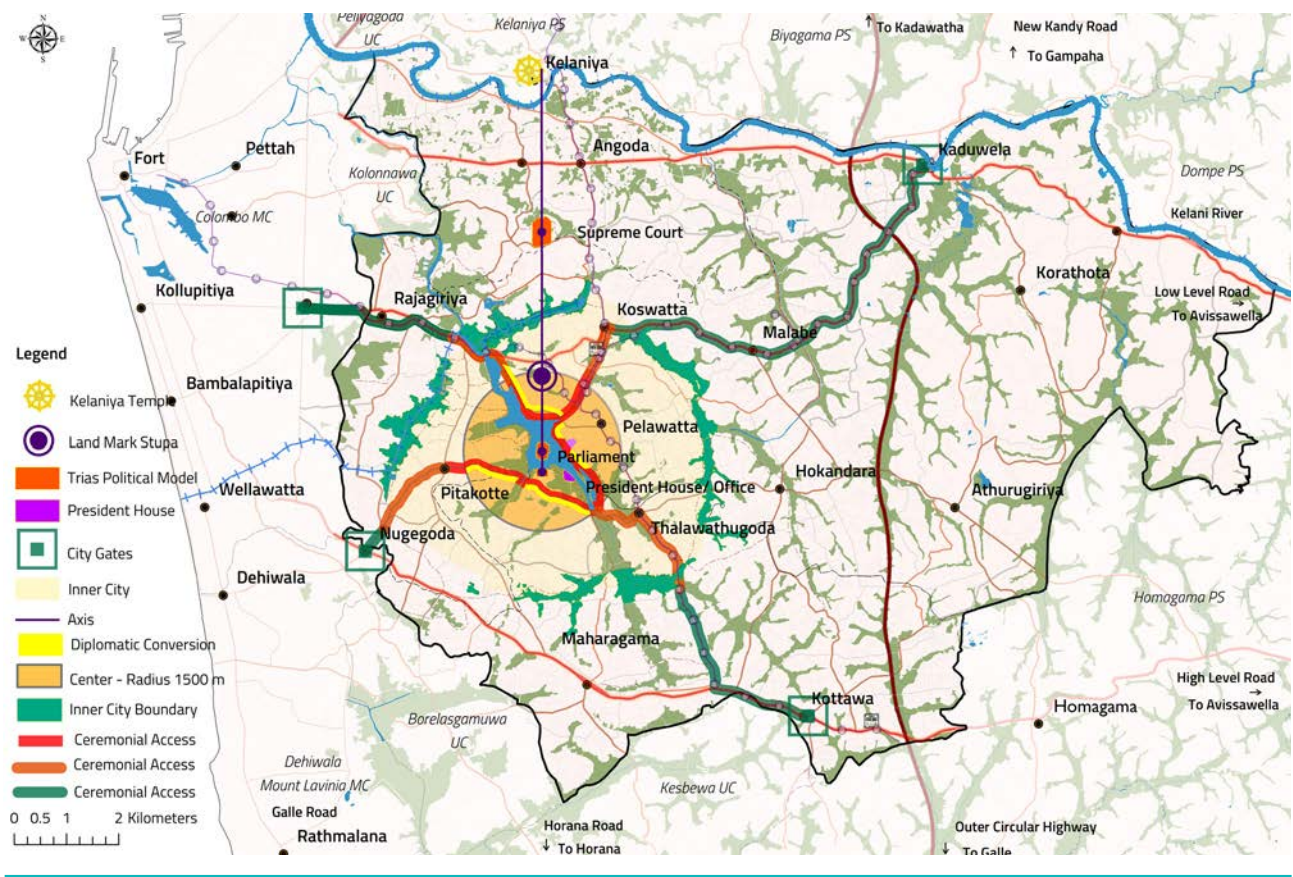


Capital City  
Inner City- Administrative District  
Inner City- Residential District  
Commercial Strip  
Commercial Office District

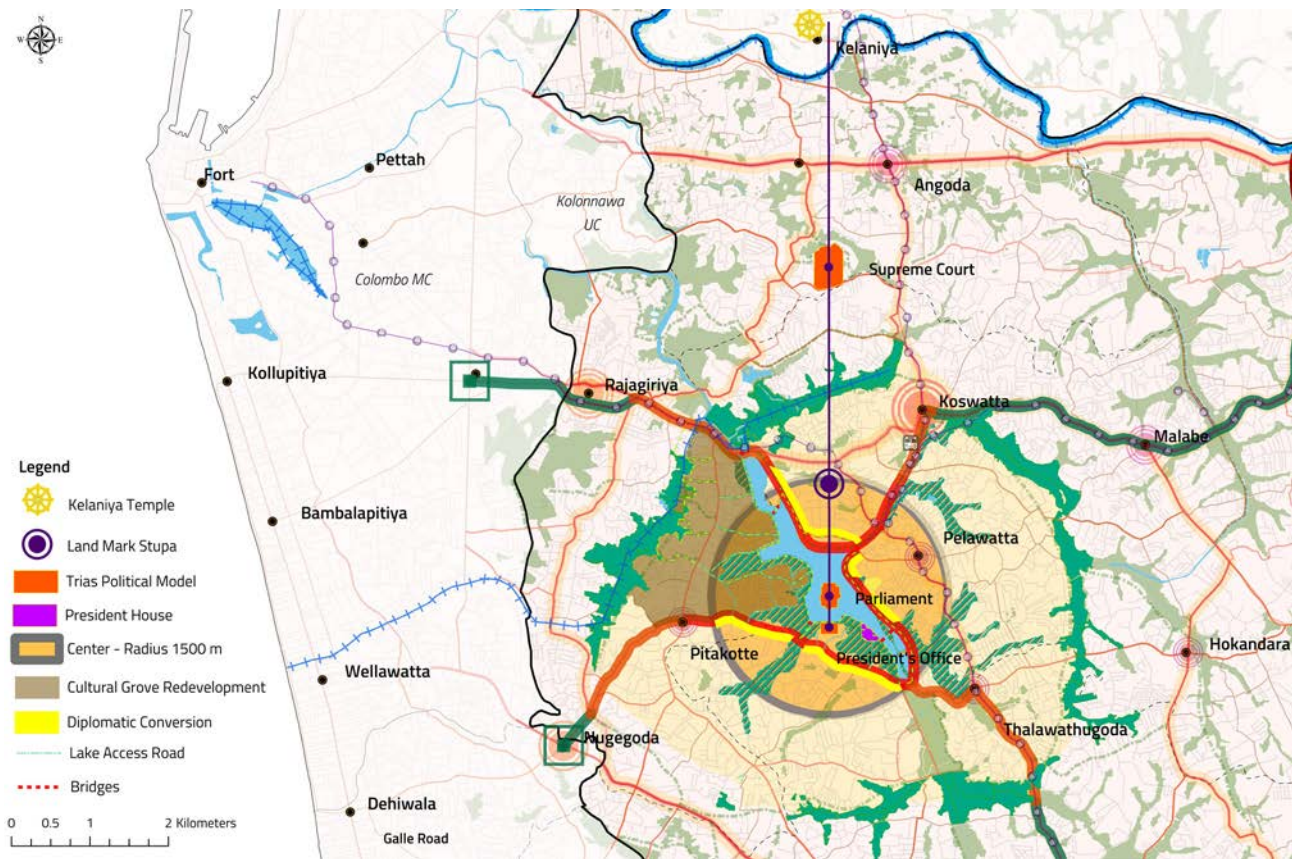
Knowledge District  
Transitional District  
Periphery  
Caring Belt



# URBAN DESIGN IMPROVEMENT STRATEGY



COMPOSITE MAP



CENTER DEVELOPMENT

<b>Center</b>	A strong and legible center
<b>Axis</b>	Key elements placed along an imaginary axis which runs over the Parliament to Kelaniya Temple
<b>Hierarchy</b>	Landmarks, Nodes and Pathways with a clear hierarchy
<b>Enclosure</b>	The wetlands of Sri Jayawardenapura forms a physical ring enclosing the capital
<b>Transitions</b>	Transitional entrances to different entities from outer sphere towards the inner sphere

The notion of an organized city is nothing new for anyone who knows the history of the ancient cities of Sri Lanka. With the Capital City Development Plan, this glory will be reinstated while going ahead with modern planning principles.

The Urban Design Strategy is the core of the Capital City Development Plan which has been strategically developed to re-establish the capital with inherent pride and glory of the kingdom of Kotte.

The Implementation of Urban Design Strategy, will revitalize the Capital City with order and legibility, making the lives of its residents, workers and commuters, much better and productive.





# TRANSPORT DEVELOPMENT STRATEGY

*The intention of Transport Development Strategy of Capital City Development Plan is to create a modern transport network in the area in order to achieve the proposed spatial structure while reducing the traffic congestion.*

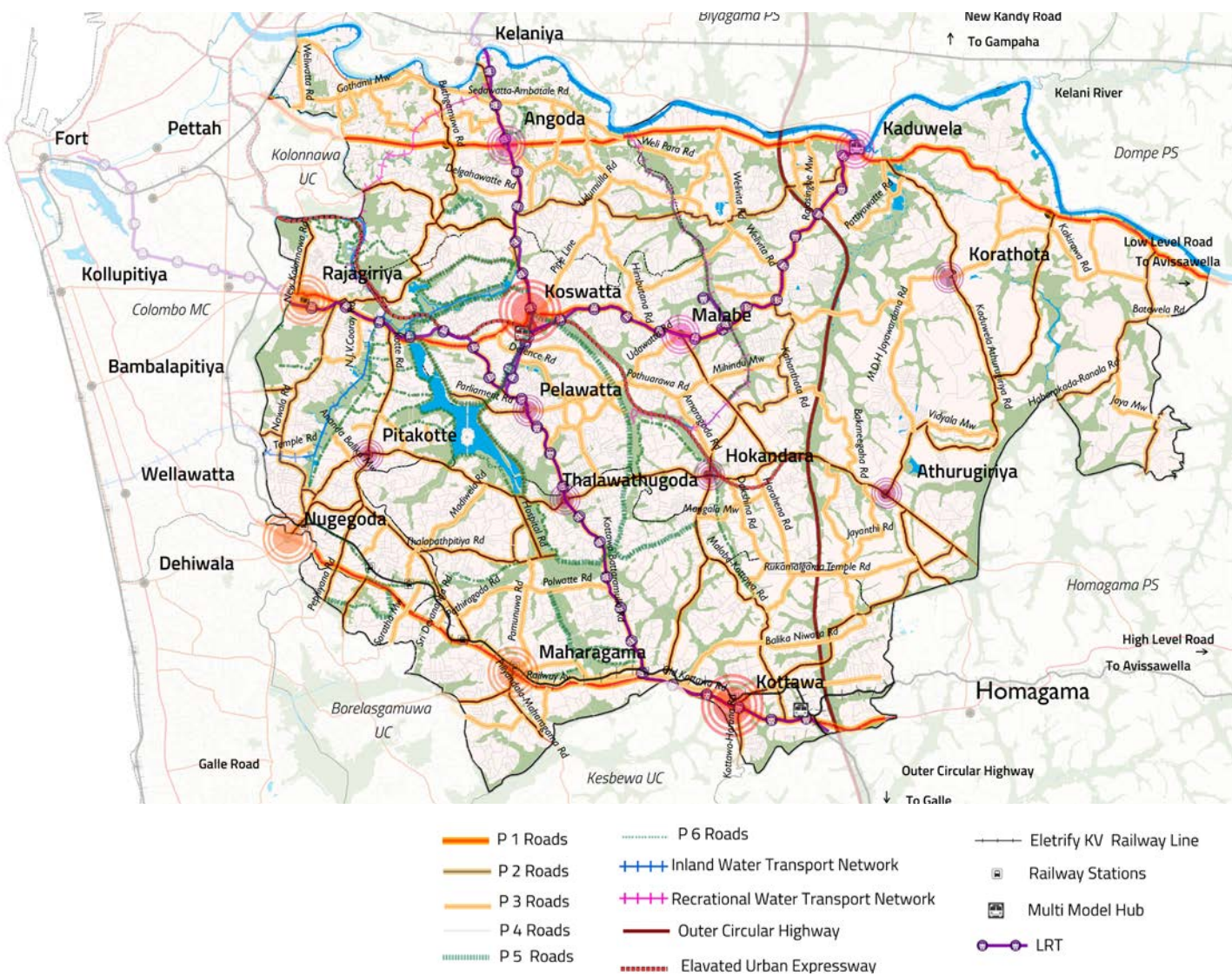
The strategy is to create a transport network which supports the proposed node and corridor development with identified densities as below,

Priority Level	Nodes
1 <sup>st</sup> priority	Koswaththa - Battaramulla   Kottawa - Makubura   Nugegoda
2 <sup>nd</sup> Priority	Maharagama   Rajagiriya
3 <sup>rd</sup> Priority	Kaduwela   Malabe   Kotikawaththa-Angoda   Thalawthugoda
4 <sup>th</sup> Priority	Athurugiriya   Korathota   Hokandara   Pelawaththe   Pitakotte

## The Transport Strategy comprises of three major strategic interventions

1. Widen existing roads and introduce new wetland roads.
2. Introduce new transportation modes integrated with the existing ones.
3. Develop multi-modal transportation exchanges for convenient transits.

With these improvements, transportation in the future Capital City will be fast, efficient and convenient, making urban travel a pleasurable experience of its own.



LIGHT RAIL TRANSIT (LRT)



ELECTRIFIED RAILWAY



INLAND WATER TRANSPORT



ELEVATED EXPRESSWAY

## Impact

Define the proposed structure of the area.

Reduce traffic congestion of the capital City.

Enhance the real estate market significantly through convenient and efficient transportation systems

Open up **32%**  
of wetlands through  
wetland roads

**510KM**  
Total road network  
improvement



# WETLAND MANAGEMENT STRATEGY

*The Capital City Development Plan assures the conservation, protection and development of the natural context by introducing a robust strategy to reinvent the capital city as a wetland city.*

The city and outskirts of the Capital City is home to a vast network of wetlands ranging from paddy fields to thick marshes.

These wetlands host rich eco systems, purify natural air, provides food and livelihoods for wetland communities and play a pivotal role in providing flood protection to the urban context. For generations, the Capital City wetlands have defined and protected the city and its suburbs.

The Wetland Management Strategy is a twofold strategy consisting of a strategic intervention for green network management with four types of specialized park developments and a strategic intervention for blue network management to conserve the water network.

## GREEN NETWORK MANAGEMENT

### Impact

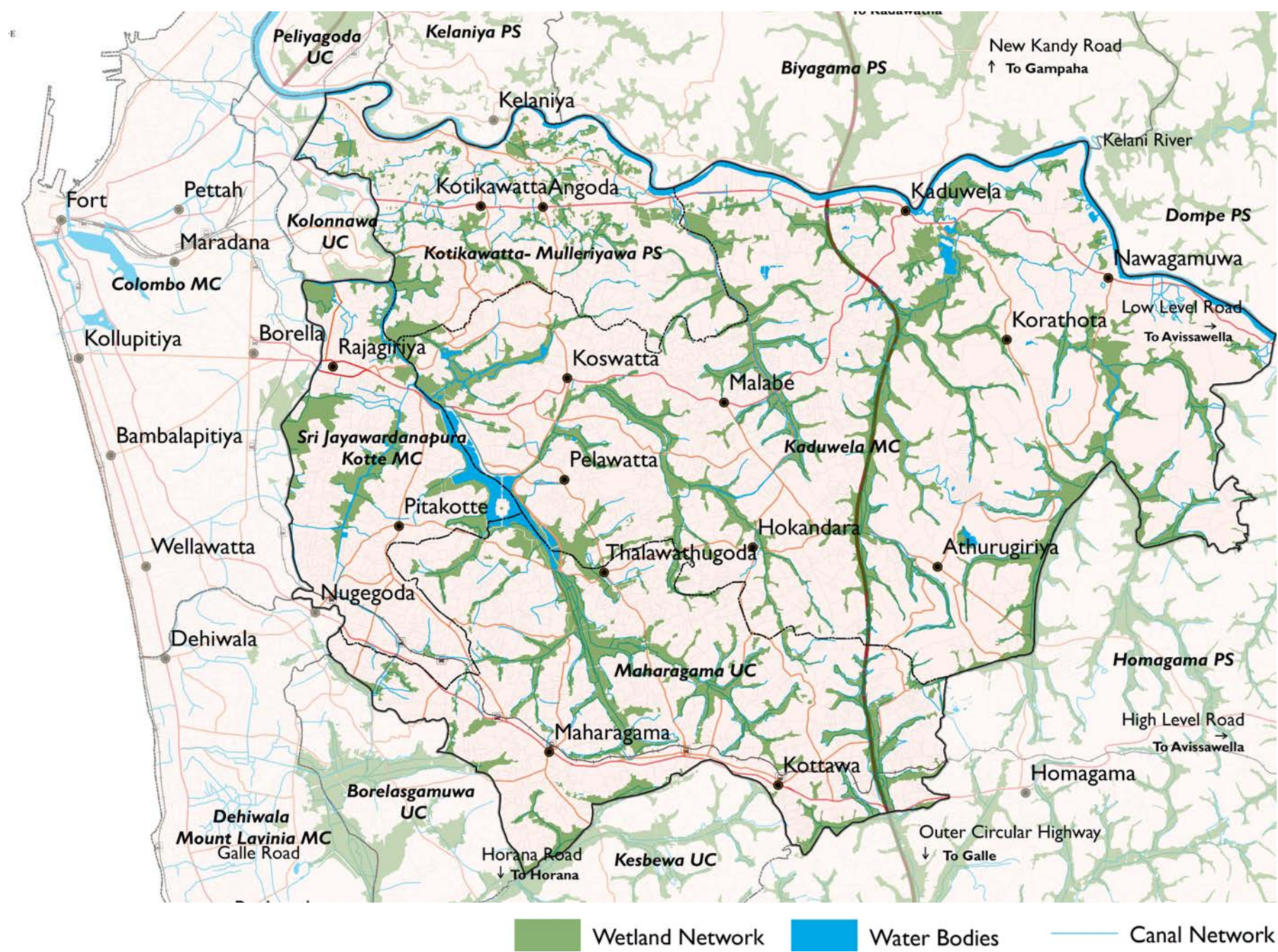
Maintain the Retention capacity

54.89%

Achieve open space demand

100%

*Rise of property value within the 0.5k buffer area (Standard Impact Area) through the Urban Park Development; (41% on Residential Land Value and 77% on Commercial Land Value)*



WETLAND NETWORK

### Center Parks 2.94km<sup>2</sup>

In the proximity of the parliament, a special type of park is to be developed to reminisce the heritage and historicity of the Kingdom of Kotte

### Inner City Park 2.96km<sup>2</sup>

The marshes in Sri Jayawardenapura Kotte area are to be developed as Inner City Park with recreational facilities, nature trails etc. The Inner City wetlands define the administrative core.

### Outer City Park 6.36 km<sup>2</sup>

Wetland parks are to be developed in the outskirts of Capital City in Kelanimulla, Malabe, Kolonnawa and Thalagama. These are to be developed as public parks with nature and eco system reserves encircling the Capital City.

### Peripheral Park 3.22km<sup>2</sup>

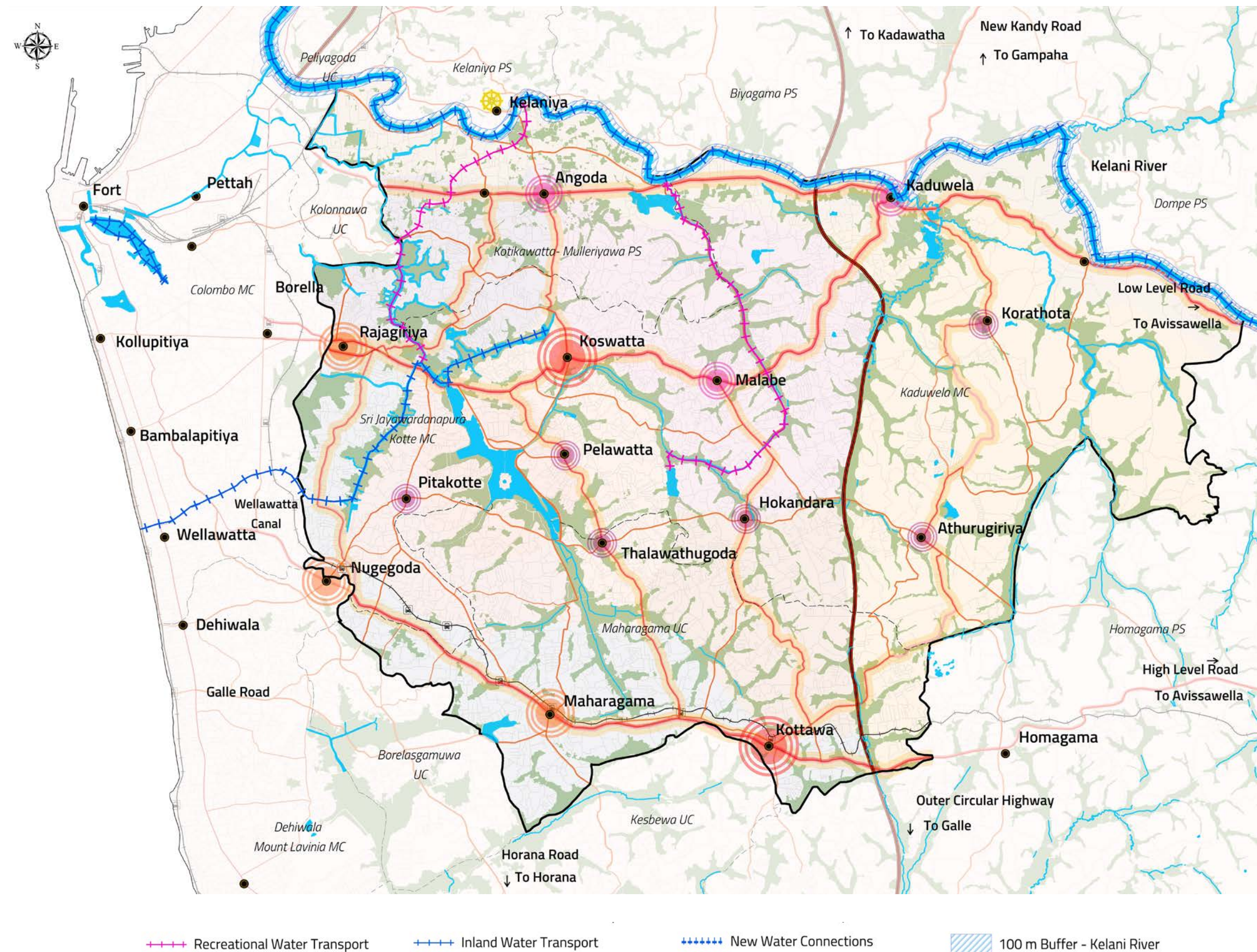
The Kaduwela Marsh is to be developed for public recreation, giving people the opportunity to enjoy and take on an adventure with family and friends.



## BLUE NETWORK MANAGEMENT

*A series of interconnected canals and waterways are to be developed as a part of the Strategic Intervention for Blue Network Management, enriching the landscape, tourist attractions and as a flood retention initiative.*

- 1 Conserve the green blue feature by linking the missing canal network of 7km length.
- 2 Develop water transport service of 14km and reduce reclamation of canals in the area.
- 3 Reduce disturbance on the water flow of Kelani River by a 100m buffer zone including 60m permanent structure restriction and 40m specially regulated development zone.
- 4 Limit the provision of infrastructure within 100m buffer.
- 5 Propose Third Priority Nodes for Low Level Road to reduce the flood damage and water flow disturbance.





# ECONOMIC DEVELOPMENT STRATEGY

The Economic Development Strategy aims at enhancing key identified aspects in the Capital City through a range of diligently crafted anchor projects in selected areas. Eight anchor projects which are located in the Outer Ring of the Capital City comes with a uniquely formulated concept.

**1. Canal Warehouse Strip Development project**

Emerging economy with a disaster – free canal warehouse strip.

**2. Knowledge City**

Technology based city for Information Technology Professionals

**3. Makumbura TOD**

Equitable and sustainable transit – orient development.

**4. Retail District**

A vibrant and well – known retail destination with varied shops.

**5. University District**

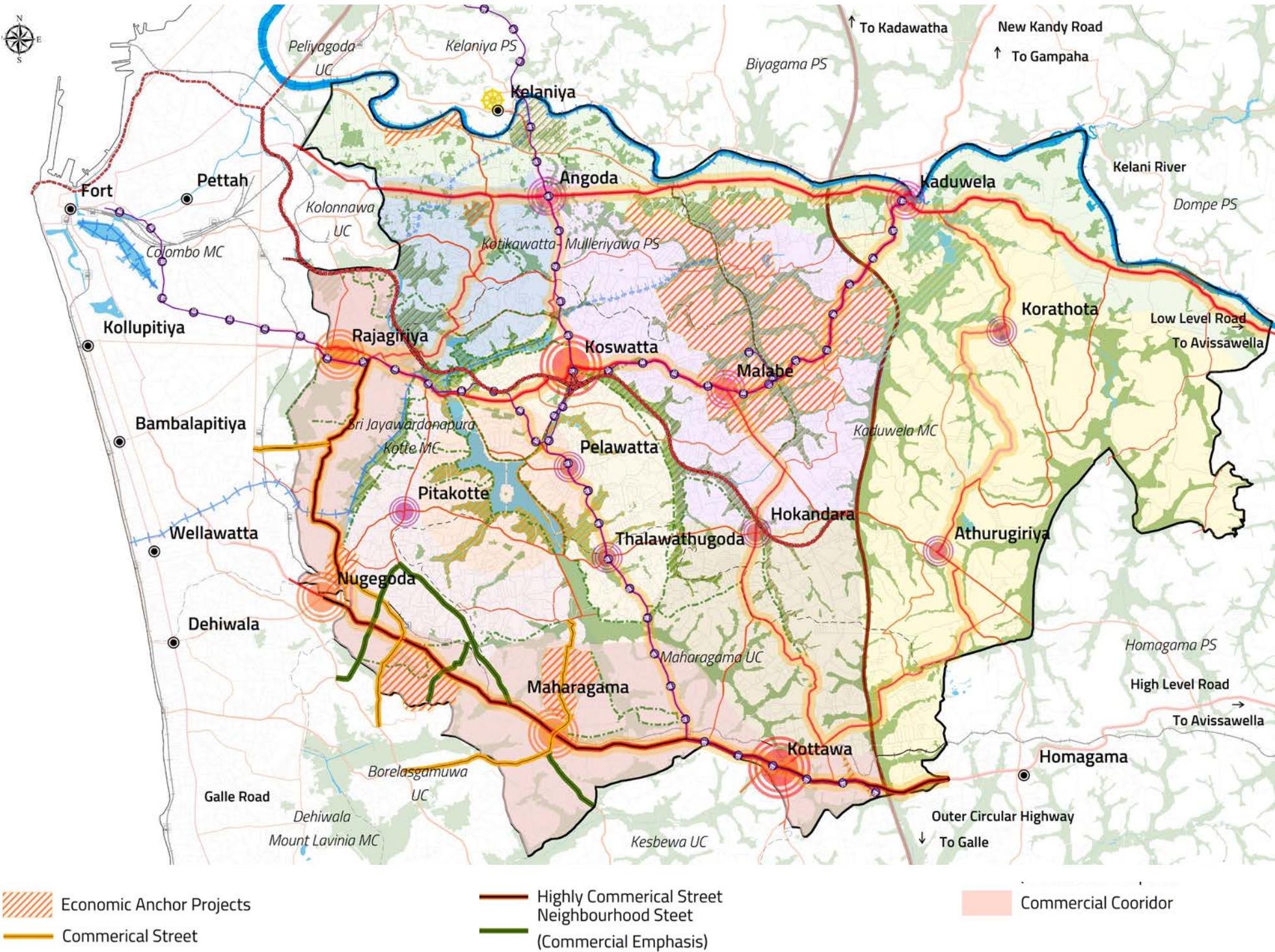
University Premises with novel transformations.

**6. Welikada Plaza**

Urban center with walkable, modern, dynamic and idiosyncratic environment

**7. Kottawa Township Improvement Project**

**8. Maharagma Township Improvement Project**



COMPOSITE MAP OF THE ECONOMIC DEVELOPMENT STRATEGY

6.26

Total Labour Force  
Participation (2016)

44.6%

Natural Growth Rate  
L.F.P (2030)

27M FT<sup>2</sup>

Total Added  
Commercial and  
Retail area

4.2M FT<sup>2</sup>

Total Added  
Institutions area

1M FT<sup>2</sup>

Total Added Private  
Office area

1.2M FT<sup>2</sup>

Total Regenerate  
Industry Warehouse  
area

1.3M FT<sup>2</sup>

Total Added  
Residential area



# SETTLEMENT MANAGEMENT STRATEGY

The Settlement Management Strategy is a Service sector initiative which attempts to create a place that prospers with smooth and efficient urban systems and smart urban facilities, Accordingly Settlement Management Strategy facilitates mainly two sectors.

- 1. Development of Residential Cluster
- 2. Management of Underserved Settlements

## Strategic Intervention for Development of Residential Clusters

1

### HIGH DENSITY CLUSTER I

- Fascinate with residents to form the Inner City character in an adorable manner
- The expected Population density (2030) 70 persons /ha
- Develop of two major service nodes in Pitakotte & Embuldeniya Junction
- Develop eco-friendly nature parks
- Open up Wetlands, through the wetland based roads. From Sri Jayawardenapura Mawatha to Kottawa – Pannipitiya Road with pedestrian and parking facilities
- Develop infrastructure for a wealthy community.

2

### HIGH DENSITY CLUSTER II

- Fascinate Professional residents to accommodate the administrative City & Knowledge City Character with outer city character
- The expected population density (2030) 78 persons/ha
- Improve Urban service at Hokandara Node
- Develop three Community parks in Hokandara Node close to Vidyala Junction and Hatharaman Handiya
- Develop a major road from Kottawa to Malabe

3

### LOW DENSITY CLUSTER

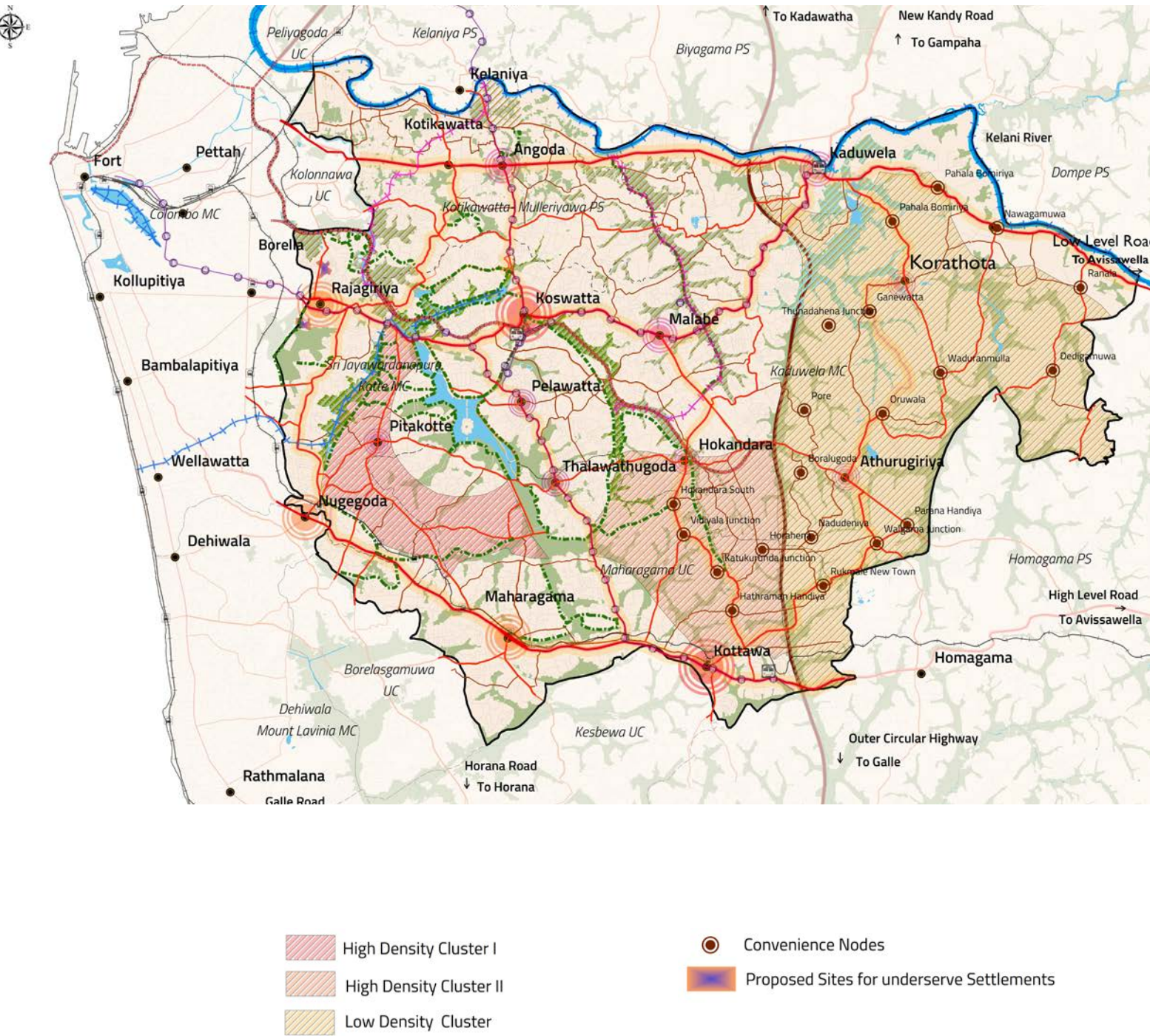
- Fascinate with residents to accommodate different housing choices with periphery character
- The expected population density (2030) 50 persons /ha
- Develop of two neighborhood nodes in Athurugiriya & Korathota
- Develop 15 Convenience Nodes
- Develop a road from Kottawa to Kaduwela as a major service road

Development of 4 Neighborhood Nodes and 15 Convenience Nodes

100% Contribution to remove underserved settlement

31.18% Active open space contribution

24% Contribution for commercial space



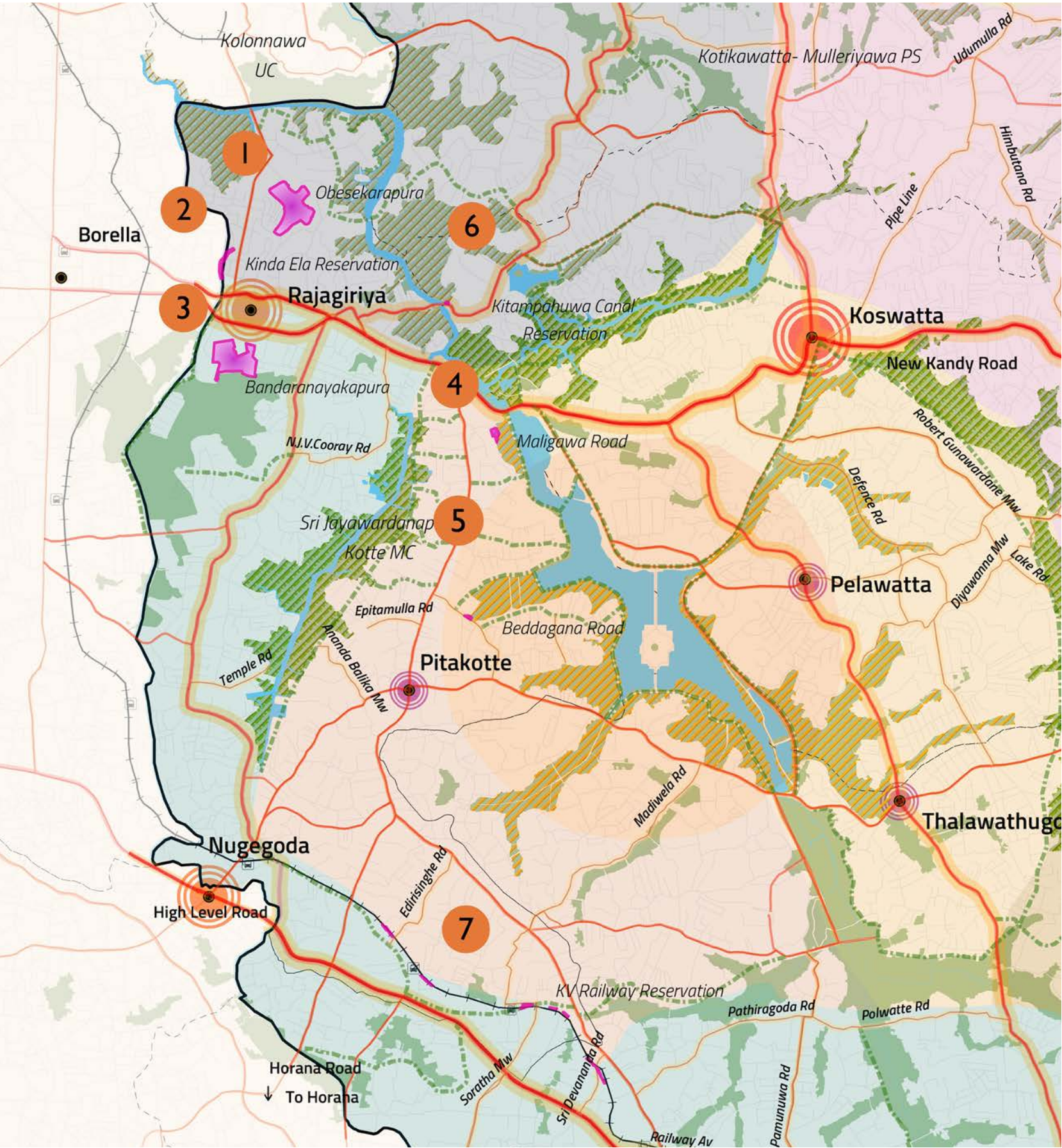


# MANAGEMENT OF UNDERSERVED SETTLEMENTS

The Settlement Management Strategic Intervention focuses on enhancing quality of life while maintaining the character of Capital City. Under this proposal, seven underserved settlements have been identified for upgrading;

- 1 Obesekarapura
- 2 Kinda Ela Reservation
- 3 Bandaranaykapura
- 4 Maligawa Road
- 5 Beddegana Road
- 6 Kittampahuwa Canal Reservation
- 7 Kelaniweli Reservation

The upgrading will be done as a re-design approach by giving land rights to slums, relocating unauthorized settlements to a facilitated place within 2km and special national level infrastructure development projects.





# ADMINISTRATIVE CLUSTER DEVELOPMENT STRATEGY

The current Capital City of Sri Lanka facilitates 99 national level of institutions within a land area of 170 hectares and accommodates 26,000 government employees approximately. The proposed Capital City Development Plan will attract more national level institutions to the proposed administrative district.

This plan consists of two strategic interventions,

1. **Cluster 01** – Administrative Area Regeneration
2. **Cluster 02** – Township Development and Road Improvement

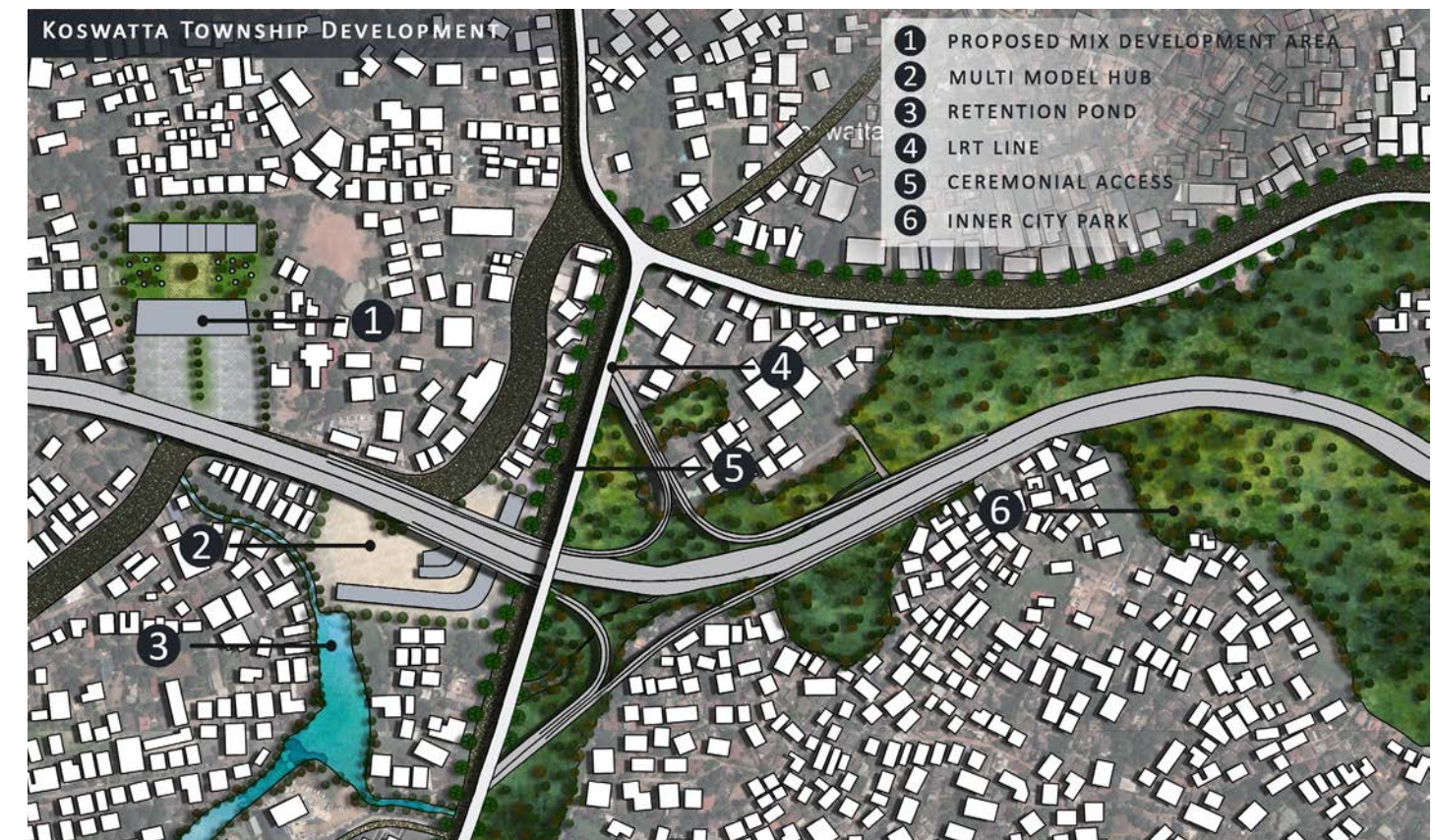


CLUSTER 01 - REGENERATION OF ADMINISTRATIVE AREA

## CLUSTER 01

### Strategic Intervention for Regeneration of Administrative Area (Diyatha Uyana to Koswatta)

Cluster 1 area is to expand from Diyatha Uyana to Koswatta with national level administrative institutions within an extent of 70 acres. Further, It is proposed to readjust adjacent lands of the administrative buildings as urban spaces and recreational parks with green spaces incorporating Diyatha Park Extension and Canal Regeneration Project.



CLUSTER 02 - TOWNSHIP DEVELOPMENT AND ROAD IMPROVEMENT

## CLUSTER 02

### Strategic Intervention for Townships Development and Road Improvement

It is expected to encourage the distribution of administrative institutions from Battaramulla to Thalawathugoda. It includes the below components.

1. **Koswatta Township Development**
2. **Thalawathugoda Township Development**
3. **Road Improvement of Cluster 02 Area**



### 1. Koswatta Township Development

Koswatta Town is identified as one of the First Priority Nodes of the Capital City. Further Koswatta will perform as a transitional node which gives the impression of entering the Administrative District of the Capital City.

- 1 Road and Transport Network Development
- 2 Ceremonial Access Ways
- 3 Multi Model Hub
- 4 Mix Development Area
- 5 Canal Regeneration
- 6 Retention Pond
- 7 Walking Path Improvement

### 2. Thalawathugoda Township Development

Thalawathugoda Township is a proposed Third Priority Town bounded to Capital City Park. It is to perform as a transitional point to enter the Inner City.

- 1 Administrative Area Development.
- 2 Recreational Area Development



### 3. Cluster 02 Area Road Improvement

Four roads to provide provision to the Cluster 02 Area in order to strengthen the intervention of proposed administrative institutions.

- 1 Develop four lane road from Ganahena to Hokandara
- 2 Develop a half circular shaped 04 lane road from Koswatta to Hokandara adjacent to Thalangama Tank & Marshy land (4.0 km)
- 3 Widen Hokandara Road into a 04 lane road
- 4 Widen Denzil Kobbakaduwa Road into 04 lane road



#### Impact

Increase the foot print of national level location in the planning area by **23%**

Provide space for **63,000** government employees

Increase **3.4%** of land use for public & semi public office spaces of proposed administrative area

Add **900, 000M<sup>2</sup>** space for government institutions which are to be relocated from CMC



# IMPLEMENTATION STRATEGY

The vision of the capital City plan, ‘Diadem Sovereign Sri Lanka’ is expected to achieve through the identified three strategic goals and nine objectives. The Implementation Strategy is initiated to guide the selection of best solutions and processes from all complex strategic activities which come under the identified strategic approaches and objectives. In order to deliver an effective Implementation, Strategy the below structured approach is prepared.



## Strategic Projects – Phase I

1. Multimodal Hub Establishment at Kosawatta Node Project
2. Administrative Cluster 1 Development
3. Multimodal Transport Hub Development – Kaduwela
4. President Office & Resident Relocation Project
5. Kotikawaththa Office Space Development
6. Center Park

## Strategic Projects – Phase II

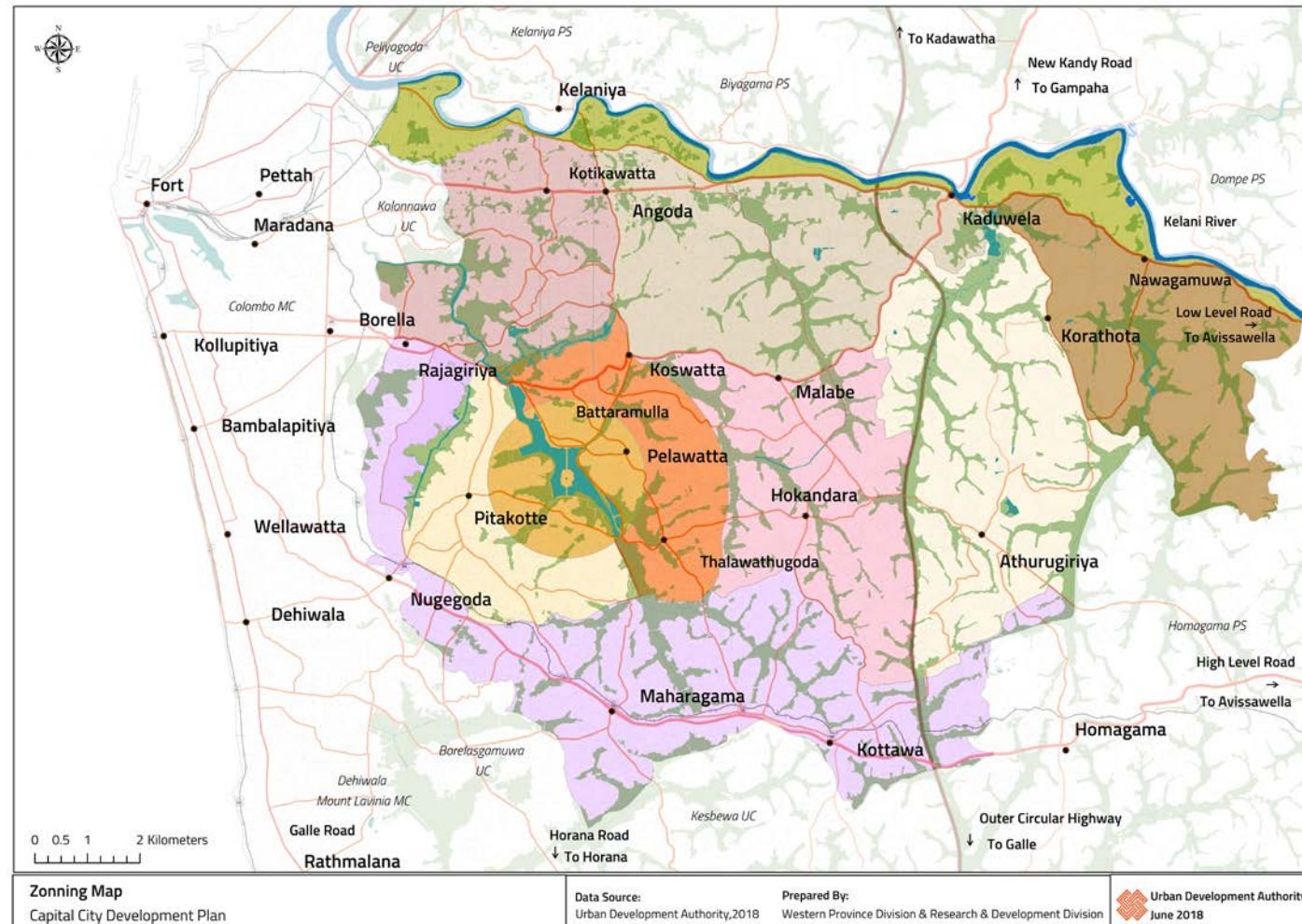
1. Knowledge City Development Project
2. Waste To Energy Project At Athurugiriya
3. University District Development Project
4. 13 Convenience Node Improvement
5. Embassies Establishment Project
6. Supreme Court Relocation And Surrounding Area Development
7. Nugegoda Super Market Area Development Project
8. Administrative Cluster 2 Development.

## Strategic Projects – Phase III

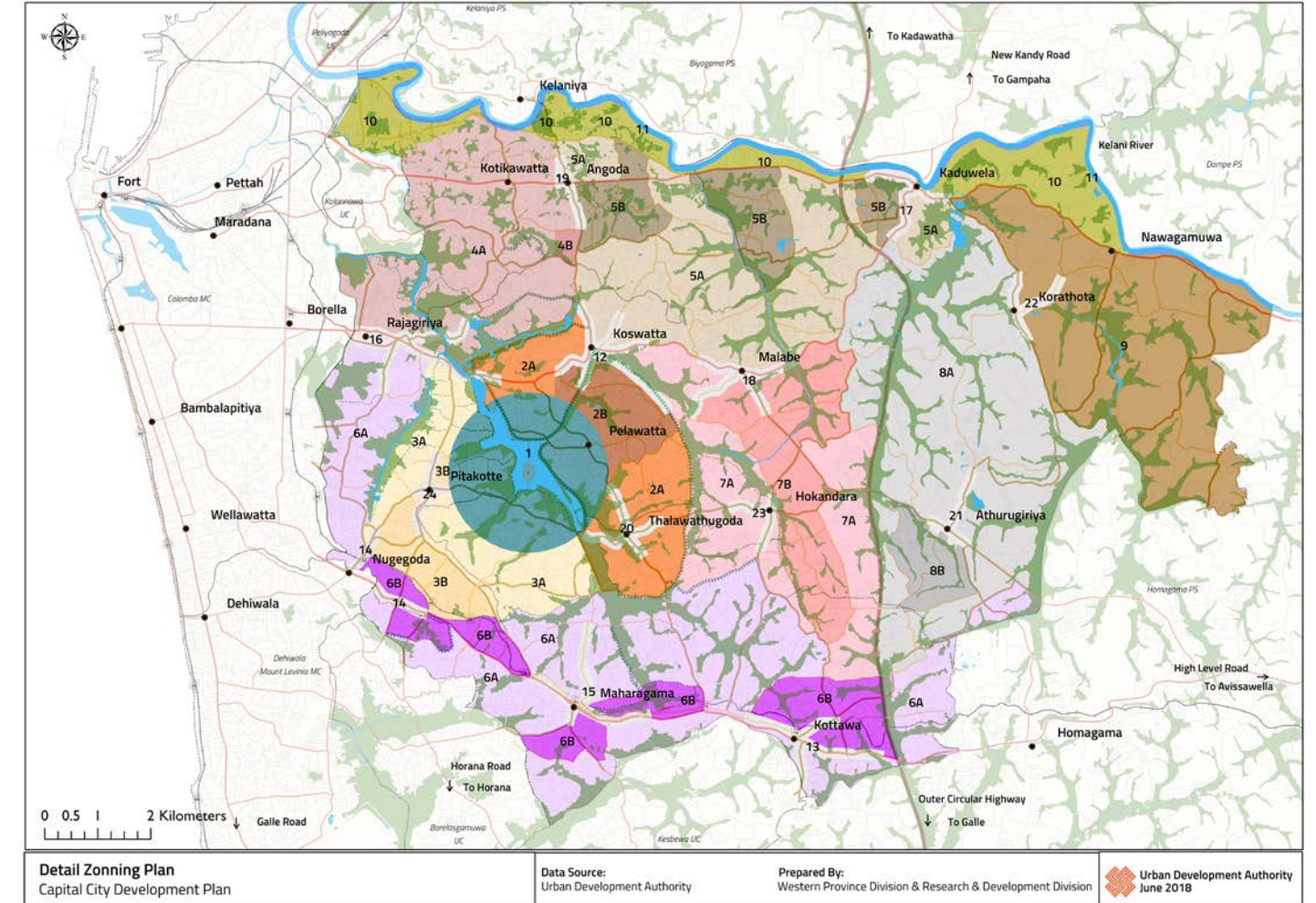
1. Industrial Warehouse Strip
2. Water Transport Project Sllrdc
3. Cultural Grove Redevelopment Project



# ZONING PLAN



# DETAILED ZONING PLAN



Zone	Population (2018)	Population 2030 based on business as usual scenario	Population 2030 based on Proposed Projects scenario	Difference between Existing and Predicted Population	Difference between Business as Usual and Proposed Projects growth rate
Center	39,000	37,000	43,000	4,000	6,500
Inner and Outer City	637,000	1,140,000	1,298,000	661,000	158,000
Periphery	137,000	186,000	204,000	67,000	18,500
Total Area	774,000	1,362,000	1,546,000	772,000	184,000



# 1ST PRIORITY+ A1:B 26 PROJECTS (2019 - 2030)

## Catogery 01 – Startegic Projects identified by Capital City Development - 2030 (SI)

1st Priority Projects (2019 -2030)	
Category 01 - Strategic Projects identified by Capital City Development - 2030 (SI)	
Project Code	Project Name
SI-I	Infrastructure Improvement Startegy
SI-I-1	Waste water Treatment and Disposable Project
SI-I-2	Hospital Complex Relocation Project
SI-W	Wetland Management Startegy
SI-W-1	Thalangama marsh related park project
SI-W-2	Capital City Park
SI-W-3	Canal Regeneration in the Administrative area Project
SI-W-4	Kolonnawa tourism development marsh related park project
SII-W- 5	Maintain Buffer along Kelani River
SI-T	Transport Development Startegy
SI-T-1	Multimodal hub Establishment at Koswatta node project
SI-T-2	Makumbura Multi Model Hub Development
SI-T-3	Multimodal Transport Hub Development-kaduwela
SI-T-4	P1 Roads
SI-T-5	P2 Roads
SI-T-6	P3 Roads
SI-T-7	Wetland Roads
SI-S	Settlement Development Strategy
SI-S-1	Neighbourhood Nodes Development in Residential Promotional Area's
SI-S-2	Shopping Mall Project at Pitakotte Junction- KMC

1st Priority Projects (2019 -2030)	
Category 01 - Strategic Projects identified by Capital City Development - 2030 (SI)	
SI-E	Economic Developmet Startegy
SI-E-1	Kotikawaththa Office Space Development
SI-E-2	Pamunuwa Textile Park Development Project
SI-E-3	Rajagiriya Welikada Plaza area Regeneration Project
SII-E-4	Maharagama Town Center Development Project
SII-E-5	Kottawa Town Center Development Project
SI-A	Admin City Development Startegy
SI-A-1	Redesign of Administrtaive Cluster I Area
SI-A-2	Conversion of Land to Urban Spaces and Recreational Parks
SI-D	Urban Design improvement &
SI-D-1	President Office & Resident area Relocation Project
SI-D-2	City Land Mark ( Stupa) Establishment Project
SI-D-3	Kaduwela City Gates Establishment project
SI-D-4	Kottawa City Gates Establishment project
SI-D-5	Nugegoda City Gate Establishmnet project
SI-D-6	D.S. Senanayake Roundabout City Gates Establishment project
SI-H	Heritage Conservation Startegy
SI-H-1	Special Heritage Guide Plan for Kotte Kingdom
SI-H-2	Designing an Archeological Trail by protecting and revealing archeological elements within walkable distance.
SI-H-3	Rampart wall Regeneration Project



# 2ND PRIORITY PROJECTS (2031 - 2040)

Catogery 02 –  
Startegic Projects identified by Capital City Development - 2030 (SII)

2nd Priority Projects (2031 -2040)	
Category 02 - Strategic Projects identified by Capital City Development - 2030 (SII)	
Project Code	Project Name
SII-W	Wetland Management Startegy
SII-W- 6	Diyatha Uyana Extension park - Phase 1
SII-W- 7	Eco Friendly Nature Park Project at Kotte Marsh
SII-W -8	Megoda Kelaniya marsh related park project
SII-W -9	Kaduwela marsh related park project
SII-W -10	Interconnection of missing links in water bodies
SII-W -11	Passenger Transport Route (Wellawaththa to Baththramulla)
SII-T	Transport Development Startegy
SII-T-4	P1 Roads
SII-T-5	P2 Roads
SII-T-6	P3 Roads
SII-T-7	Wetland Roads
SII-S	Settlement Development Strategy
SII-S-3	13 Conveince Node Development Project
SII-S-4	Improving of Kaduwela - Homagama Road from Wellehandiya to Homagama
SII-E	Economic Developmet Startegy
SII-E-7	Nugegoda Super Market Area regeneration Project
SII -E-8	University District Development Project
SII-A	Admin City Development Startegy
SII-A3	Administrative Cluster 2 Development project
SII-A4	Koswaththa Township Development Project
SII-D	Urban Design improvement & Heritage Conservation Strategy
SII-D7	Project of landscape improvement Along The Ceremonial Access
SII-D8	Project of Facade improvement Along The Ceremonial Accesses
SII9-D	Pathways construction Project surrounding the Diyawanna Lake
SII-D10	Embassies Establishment Project
SII-D11	Three pocket parks Establishment project near to Diyawanna Lake
SII-D12	Supreme Court Relocation and Surrounding area Landscaping Project

# 3RD PRIORITY PROJECTS (2041 - 2050)

Catogery 03 –  
Startegic Projects identified by Capital City Development - 2030 (SIII)

3rd Priority Projects (2041 -2050)	
Category 03 - Strategic Projects identified by Capital City Development - 2030 (SIII)	
Project Code	Project Name
SIII-W	Wetland Management Startegy
SIII-W-12	Malabe marsh related park project
SIII-W-13	Green Walkway project at Thalangama Tank
SIII-W-14	Redesign Kelani River Bridge
SIII-W-15	Baththaramulla to kelaniya Water Transport
SIII-T	Transport Development Startegy
SIII-T- 12	P1 Roads
SIII-T- 13	P2 Roads
SIII-T- 14	P3 Roads
SIII-T- 15	Wetland Roads
SIII-S	Settlement Development Strategy
SIII-S5	High End Residential Phase II- Residential Development Project at Thalapathpitiya
SIII-S6	High end Residential Phase I- Residential Development Project at Pitkaotte Junction
S-T-7	Community Park Development Project
	Phase I- Community Park at Hokanadara (1.1 acre)
	Phase II- Community Park at Vidyala Junction (2.5 acre)
	Phase III- Community Park at Hatharaman Handiya (0.45 acre)
SIII-E	Economic Developmet Startegy
SIII-E-9	Industrial Warehouse Strip project
SIII-E-10	Knowledge City Development Project
SII-A	Admin City Development Startegy
SII-A-5	Thalawathugoda Township Development Project
SI-A-6	Road Improvement Projects Towards Cluster 2 area
SII-D	Urban Design improvement & Heritage Conservation Strategy
SIII-D+13	Cultural Grove Redevelopment Project





KOTIKAWATHTHA TOWN CENTER



KADUWELA MULTI-MODEL HUB



KADUWELA TOWN CENTER



NUGEGODA TOWN CENTER



LINE UP TRIAS POLITICA INSTITUTIONS



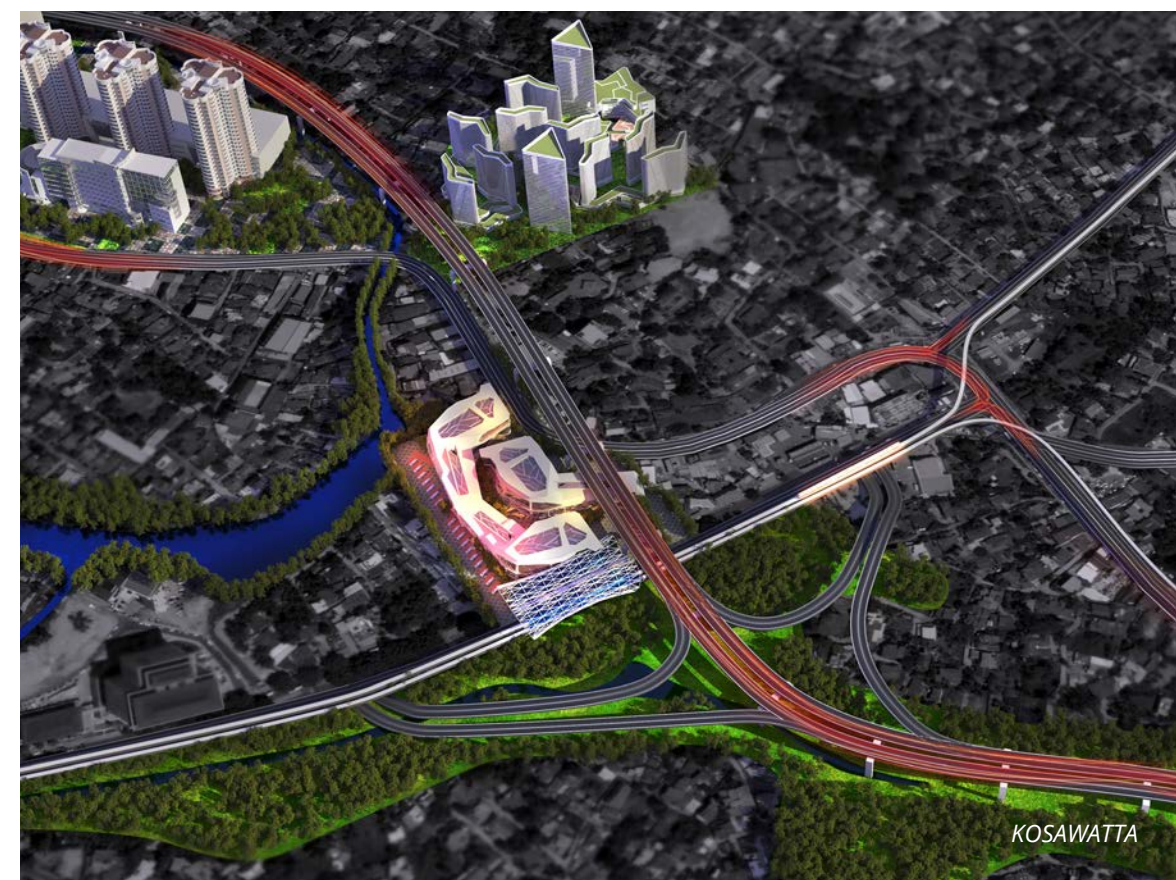
CAPITAL VALLEY



PITAKOTTE



CAPITAL CITY CENTER



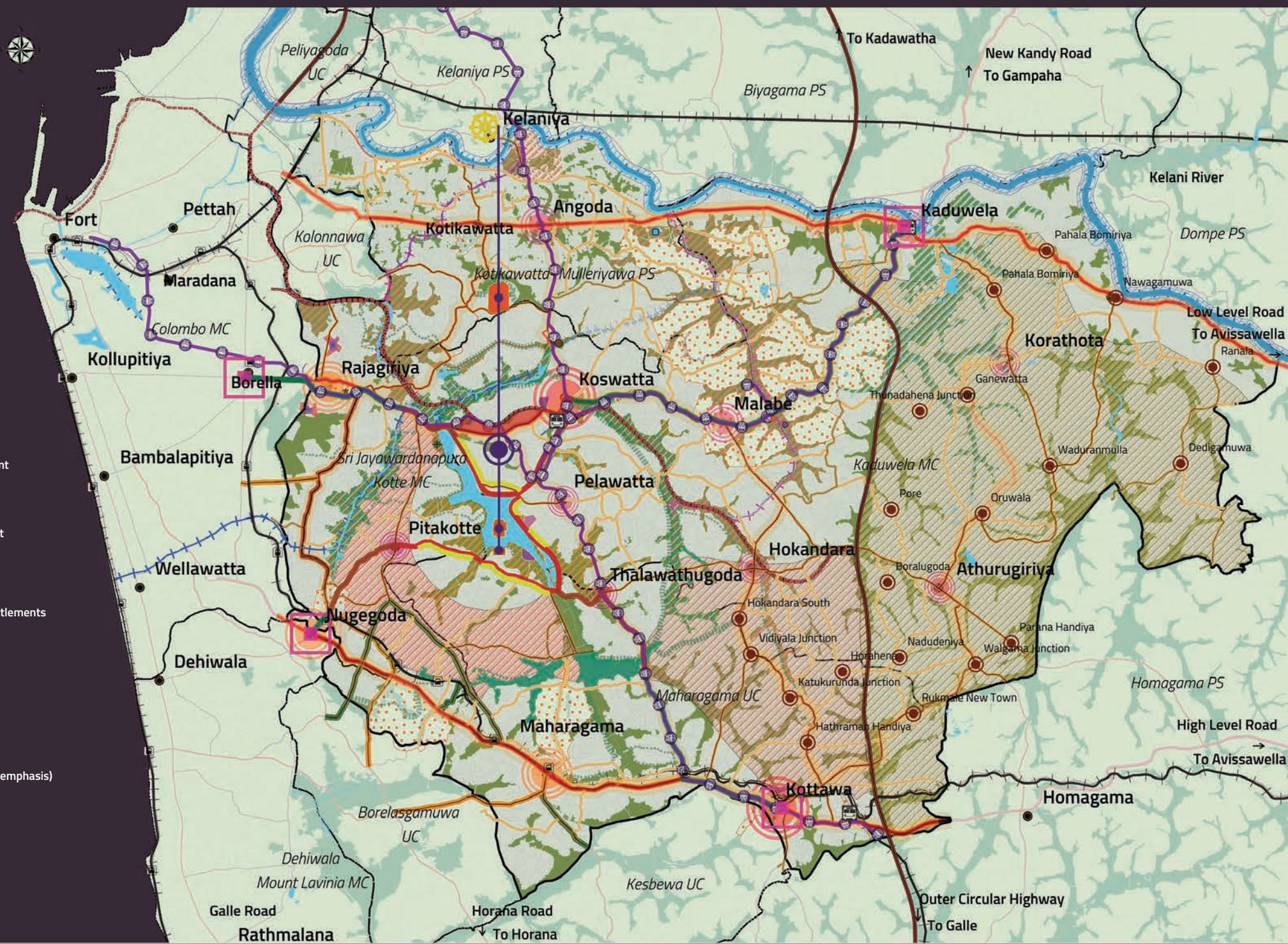
KOSAWATTA



# CAPITAL CITY DEVELOPMENT PLAN 2019 – 2030

The Kotte-Sri Jayawadanepura, Sri Lanka's Capital City Development Plan sets out the vision, objectives and the strategies for an esteemed, sustainable and inclusive city with its own identity, vibrant spaces, community facilities and efficient urban systems.

It provides the detail framework to guide future physical developments undertaken by the development agencies, investors, state and private organizations and the individuals within the respective area identified by this Plan for the 'Capital City Region'



Western Province Division & Research & Development Division  
Urban Development Authority  
Ministry of Megapolis & Western Development